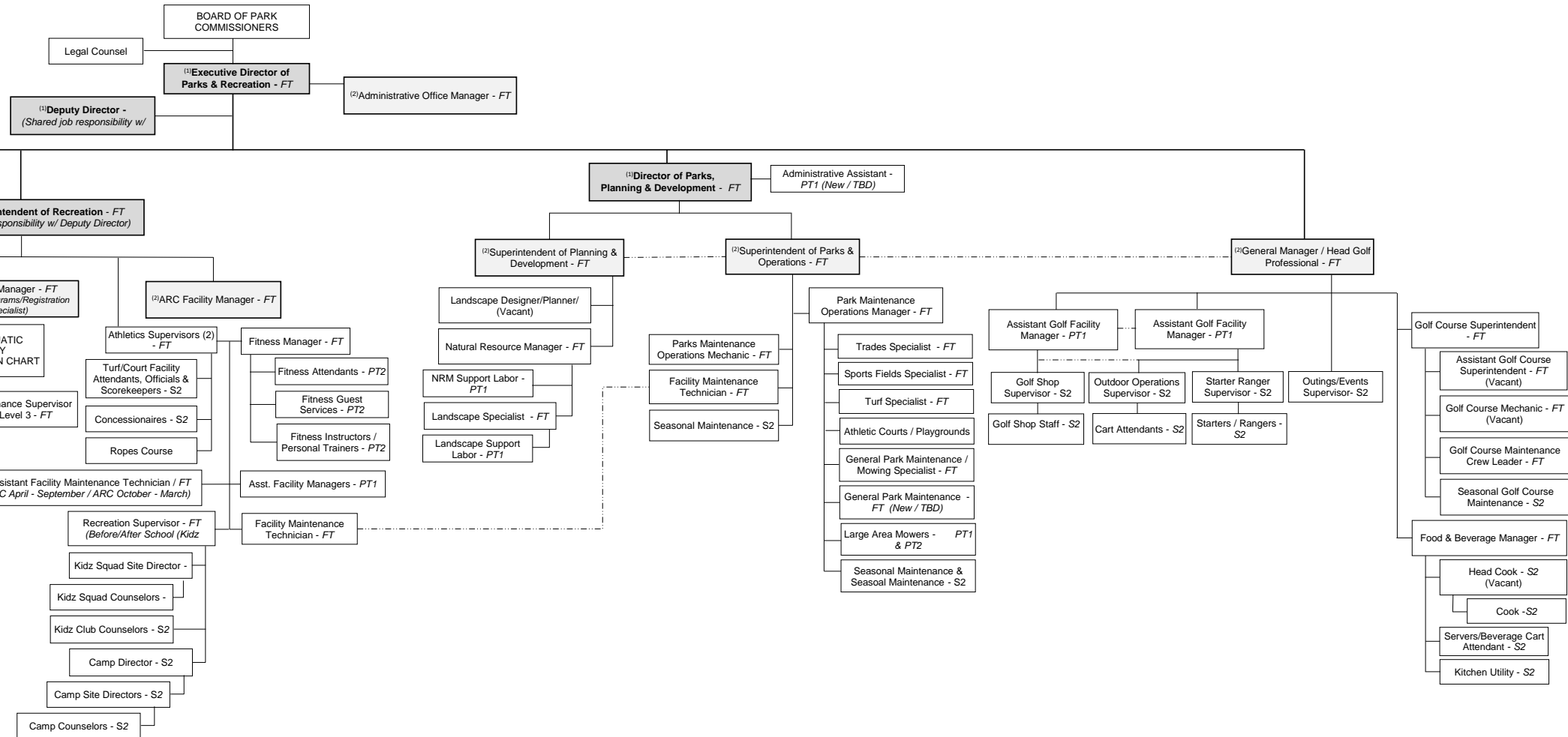




**Woodridge  
PARK DISTRICT**  
**ORGANIZATION CHART**  
Full & Permanent Part Time Employees  
Approved 2/16/21



**Definition of Employees Legend:**  
 FT - Full Time  
 PT1 - Part Time / 12 Months/year / > 1,000 Hours/year  
 PT2 - Part Time / 12 Months/year / < 1,000 Hours/year  
 S1 - Seasonal / < 12 Months/Year / > 1,000 Hours/year  
 S2 - Seasonal / < 12 Months/Year / < 1,000 Hours/year

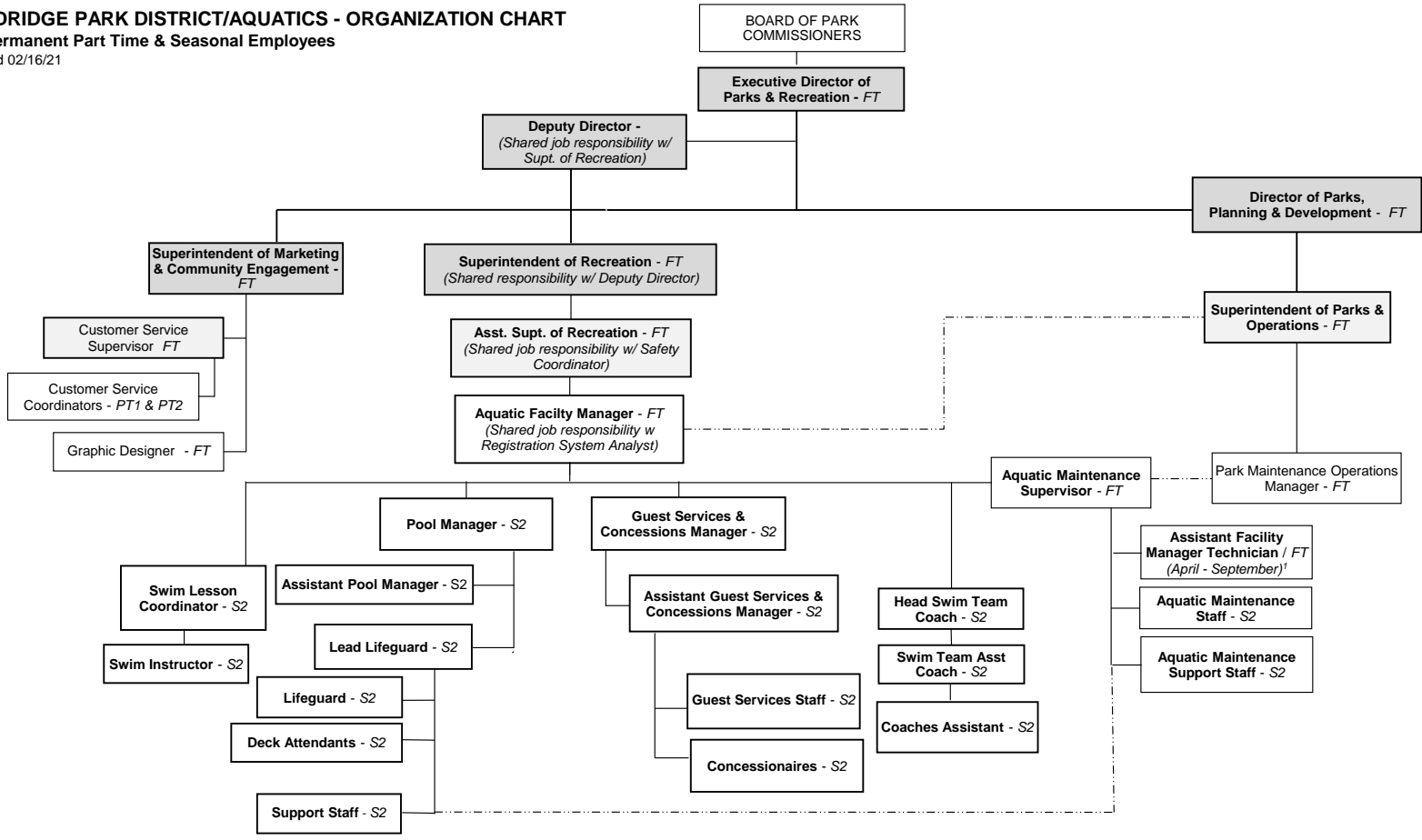
<sup>(1)</sup> Leadership Team  
<sup>(2)</sup> Management Team



**WOODRIDGE PARK DISTRICT/AQUATICS - ORGANIZATION CHART**

Full, Permanent Part Time & Seasonal Employees

Approved 02/16/21



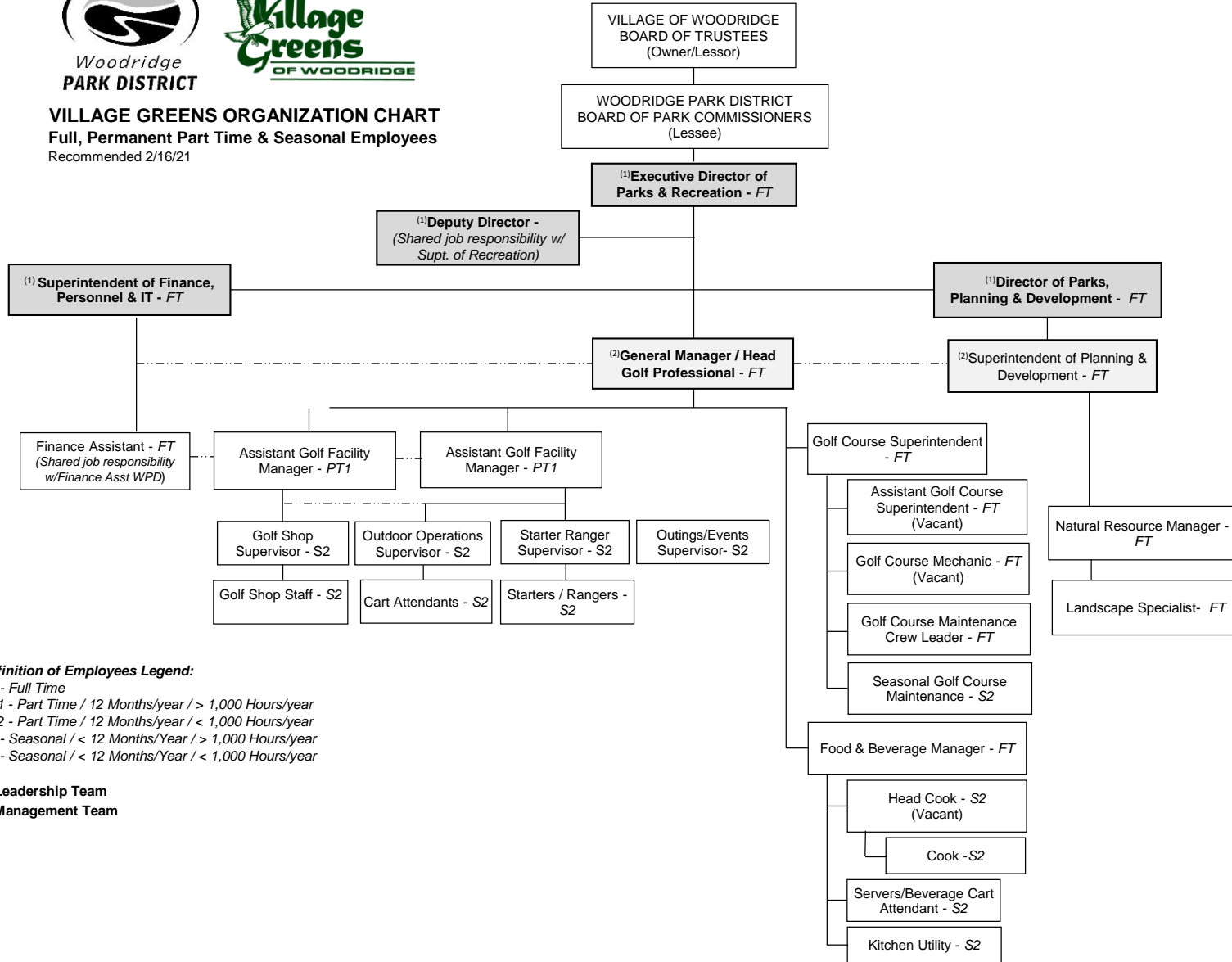
<sup>1</sup> Asst. Facility Manager Technician (Shared between ARC & Aquatics)

**Definition of Employees Legend:**  
 FT - Full Time  
 PT1 - Part  
 PT2 - Part Time / 12 Months/year / < 1,000 Hours/year  
 S1 - Seasonal / < 12 Months/Year / > 1,000 Hours/year  
 S2 - Seasonal / < 12 Months/Year / < 1,000 Hours/year

<sup>(1)</sup> Leadership Team  
<sup>(2)</sup> Management Team



**VILLAGE GREENS ORGANIZATION CHART**  
 Full, Permanent Part Time & Seasonal Employees  
 Recommended 2/16/21



**Definition of Employees Legend:**

- FT - Full Time
- PT1 - Part Time / 12 Months/year / > 1,000 Hours/year
- PT2 - Part Time / 12 Months/year / < 1,000 Hours/year
- S1 - Seasonal / < 12 Months/Year / > 1,000 Hours/year
- S2 - Seasonal / < 12 Months/Year / < 1,000 Hours/year

- (1) Leadership Team
- (2) Management Team